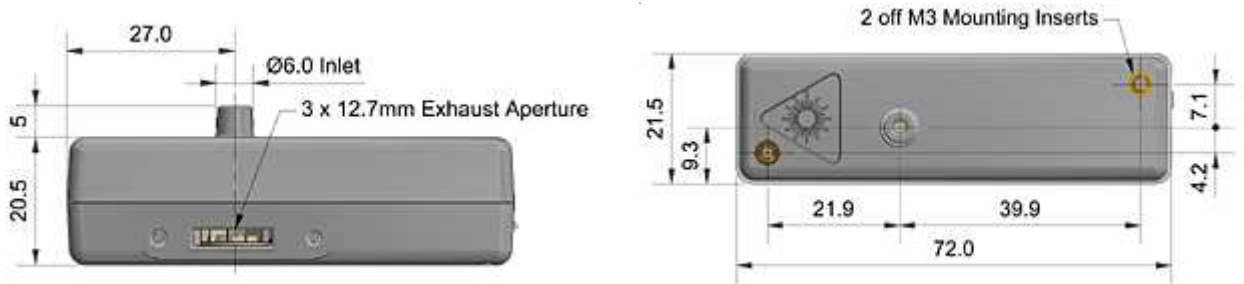




OPC-R1 Particle Monitor

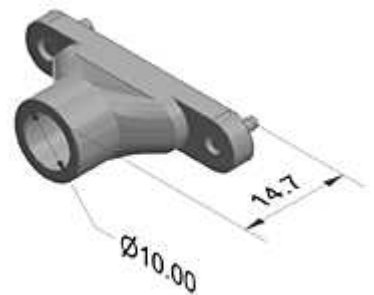
Technical Specification

Figure 1 OPC-R1 Schematic Diagram



- Reports PM₁, PM_{2.5}, PM₁₀ (PM_{4.25} as an option), plus histograms
- SPI connection for communication and firmware upgrades
(SPI interface not included, order code 000-OSPI-00)
- PC software supplied
- Removable fan exit adaptor
- Small size and low power consumption
- Configurable to specific applications

Removable Exhaust Extension



MEASUREMENT

Particle range*	µm spherical equivalent size (based on RI of 1.5)	0.35 to 12.4
Size categorisation	Number of software bins	16
Sampling interval	Histogram period (seconds)	1 to 30
Total flow rate	L/min (typical)	0.24
Max particle count rate	particles/second	10,000
Max coincidence probability	%concentration at 10 ⁶ particles/L	0.7

* Based on 50% detection efficiency at 0.35µm

POWER

Measurement mode	mA (typical)	95
Standby mode	mA (typical)	< 5
Voltage range	VDC	4.8 to 5.2
Switch-on transient	mW for 1ms	< 5000

KEY SPECIFICATIONS

Digital interface	(No data storage)	SPI Mode 1
Laser classification	as enclosed housing	Class 1
Temperature range	°C	-10 to 45
Humidity range	% rh (continuous)	0 to 95 (non-condensing)
Warranty	months	12
Weight	g	< 30



At the end of the product's life, do not dispose of any electronic sensor, component or instrument in the domestic waste, but contact the instrument manufacturer, Alphasense or its distributor for disposal instructions.

NOTE: As applications of use are outside our control, the information provided is given without legal responsibility. Customers should test under their own conditions, to ensure that the unit is suitable for their own requirements.



OPC-R1 Performance Data

Technical Specification

Figure 2 Particle size distribution for 0.75 and 3 um PSL spheres using the OPC-R1 and the Alphasense software

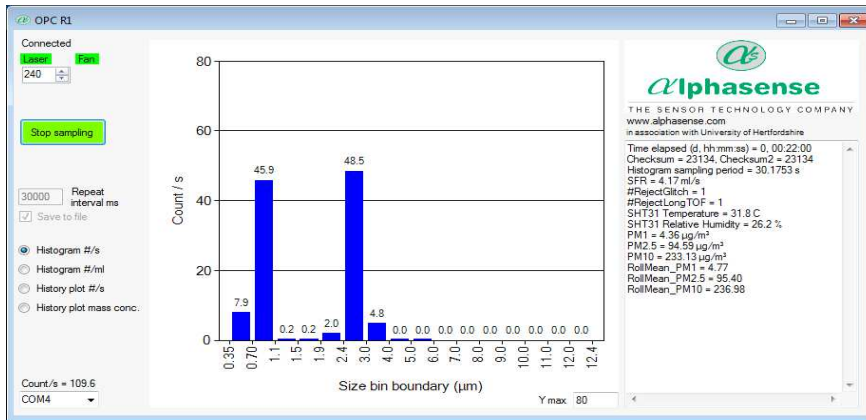


Figure 2 shows the OPC-R1 particle size distribution for the test aerosol.

Figure 3 Comparison of PM2.5 monitoring by OPC-R1 sensor and TSI OPS 3330 and DustTrak instruments

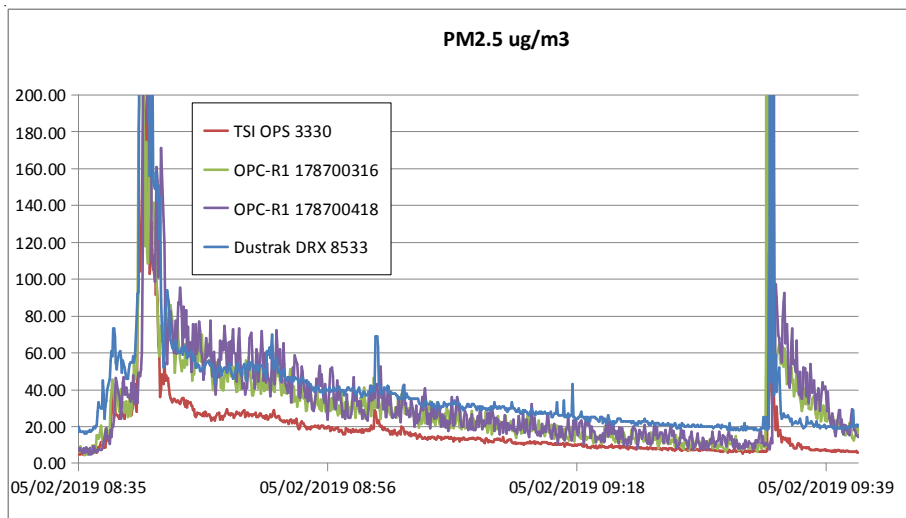


Figure 3 shows a comparison of PM2.5 monitoring by OPC-R1 sensor and TSI OPS 3330 and DustTrak instruments. All are set at 5s averaging and are sampling the ambient air of a work shop, the raw 3330 data has been used to calculate a PM figure.

Figure 4 Comparison of PM10 monitoring by OPC-R1 sensor and TSI OPS 3330 and DustTrak instruments.

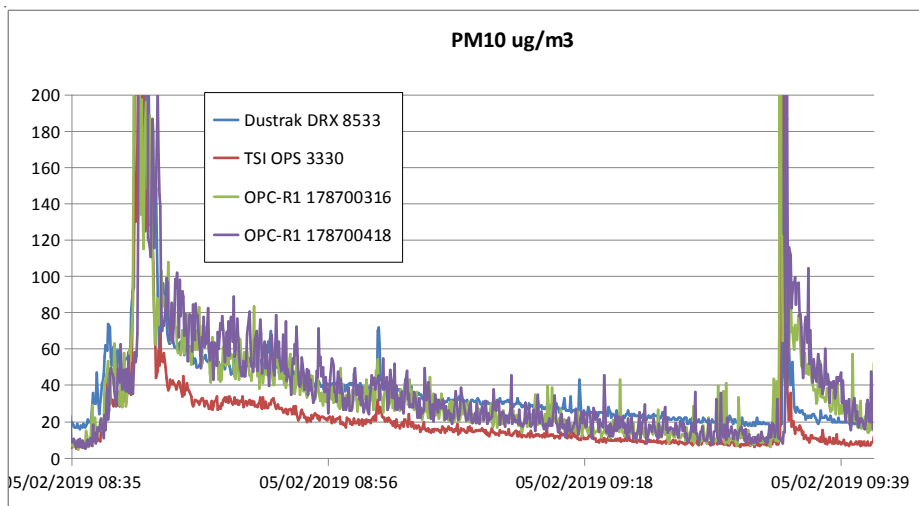


Figure 4 shows a comparison of PM10 monitoring by OPC-R1 sensor and TSI OPS 3330 and DustTrak instruments. All are set at 5s averaging and are sampling the ambient air of a work shop, the raw 3330 data has been used to calculate a PM figure.

For further information on the performance of this sensor, on other sensors in the range or any other subject, please contact Alphasense Ltd. For Application Notes visit "www.alphasense.com".

In the interest of continued product improvement, we reserve the right to change design features and specifications without prior notification. The data contained in this document is for guidance only. Alphasense Ltd accepts no liability for any consequential losses, injury or damage resulting from the use of this document or the information contained within. (©ALPHASENSE LTD) Doc. Ref. OPC-R1/AUG19